

# the STANDARD

WILMINGTON APARTMENTS

## UNIT 1ST22

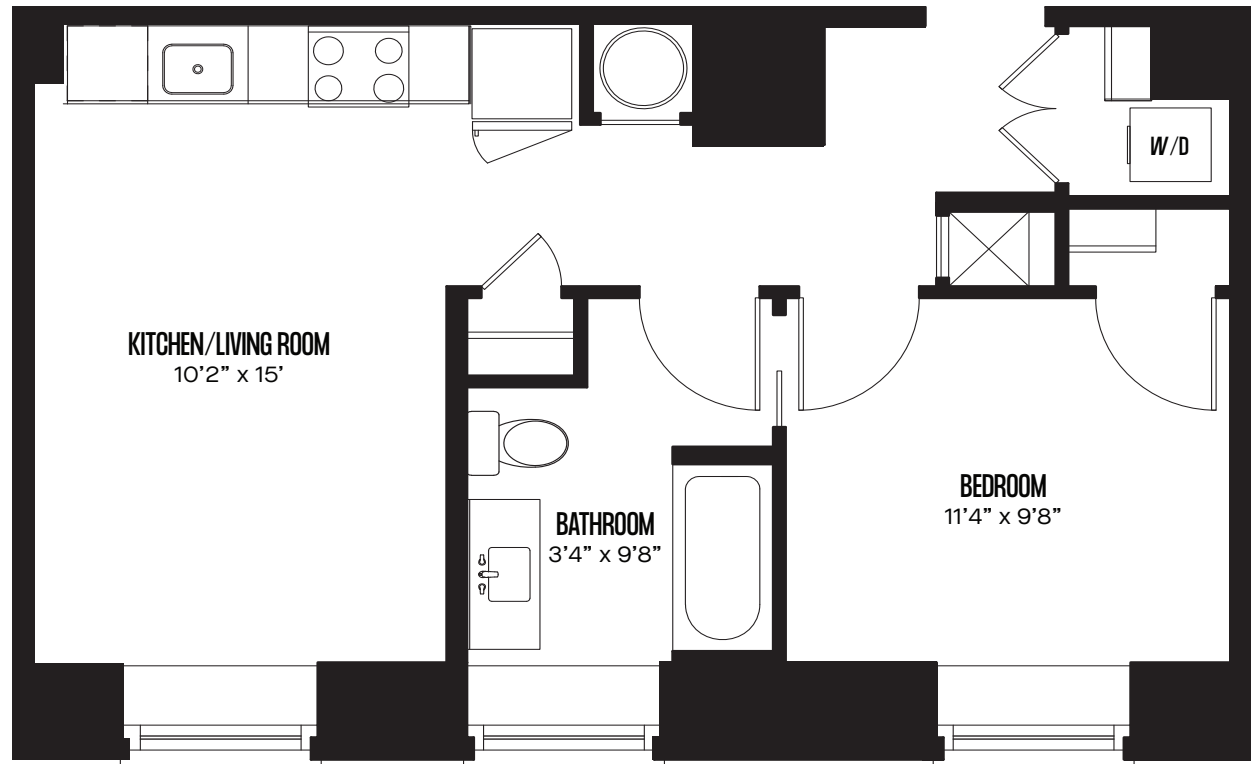
1 Bed / 1 Bath  
523 SF Total

## FEATURES

- Quartz Countertops
- Natural Light
- Soaking Tub
- In-Unit Washer & Dryer
- Keyless Entry

## CONTACT

[leasing@residebpg.com](mailto:leasing@residebpg.com) for  
leasing inquiries.



1001 N ORANGE ST, WILMINGTON, DE  
[www.residethestandard.com](http://www.residethestandard.com)

RESIDE // BPG 

Floor plans are an artist's rendering. All dimensions are approximate. Actual product and specifications may vary in dimension or detail. Not all features are available in every apartment. Price and availability are subject to change. Please see a representative for details.